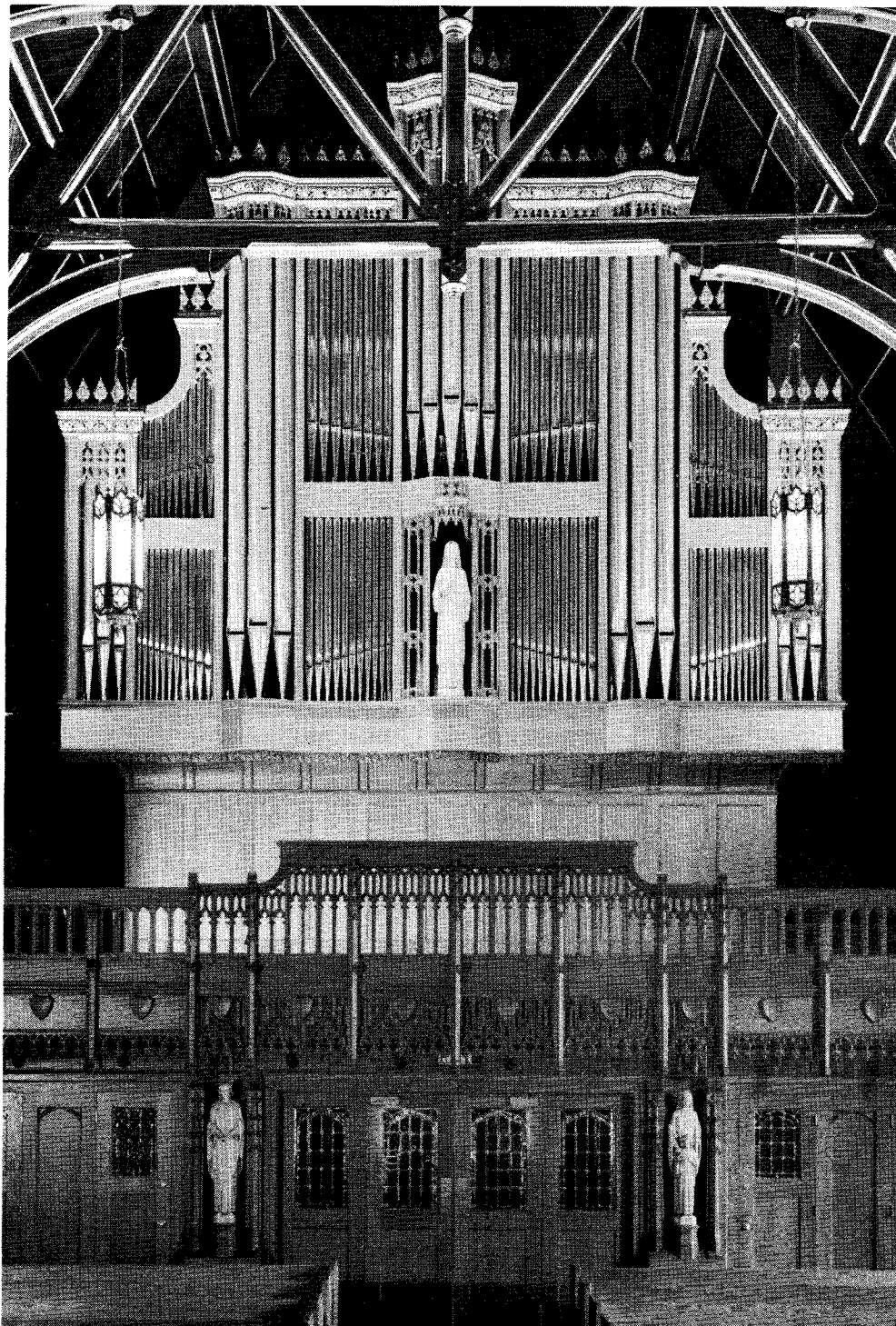


SCHLICKEK ORGAN CO., INC.

Buffalo, New York 14217

SPECIFICATION



THE CHURCH OF THE ASCENSION (Episcopal)
Chicago, Illinois

GREAT ORGAN

- 16' Gedecktpommer
- 8' Principal
- 8' Gemshorn
- 8' Holzfloete
- 4' Octave
- 4' Hohlfloete
- 2' Schwegel
- IV-VI Mixture
- IV Scharf
- 16' Trumpet
- 8' Trumpet
- 4' Trumpet (Ext.)

POSITIV ORGAN

- 8' Gedeckt
- 4' Rohrfloete
- 2' Principal
- 2' Blockfloete
- 1-3/5' Terz (Tenor C)
- 1-1/3' Klein-Nasat
- 1' Siffloete
- III-IV Mixture
- III Terzzimbel
- 16' Holzregal
- 8' Krummhorn
- Tremolo
- 16' Trumpet (Gt.)
- 8' Trumpet (Gt.)
- 4' Trumpet (Gt.)

SWELL ORGAN

- 8' Rohrfloete
- 8' Salicional
- 8' Voix Celeste
- 4' Principal
- 4' Koppelfloete
- 2-2/3' Nasat
- 2' Nachthorn
- 1-3/5' Terz (Tenor C)
- IV-V Mixture
- 16' Fagott
- 8' Schalmey
- 4' Clarion
- Tremolo

PEDAL ORGAN

- 32' Untersatz (Ext.)
- 16' Principal (Ext.)
- 16' Subbass
- 8' Octave
- 8' Flachfloete
- 8' Gedeckt (Ext.)
- 4' Choralbass
- 4' Gedeckt (Ext.)
- 2' Hohlfloete
- III Rauschpfeife
- IV Mixture
- 32' Contra-Fagott (Ext.)
- 16' Posaune
- 16' Fagott (Sw.)
- 8' Trumpet (Ext.)
- 4' Schalmey
- 2' Cornet (Ext.)
- Tremolo

Zimbelstern
Slider Chests

Specification by Herman L. Schlicker and Donald Ingram in consultation with Benjamin Hadley.

The St. Cecilia Organ case was designed by James R. M. Morrison, A. I. A. and the Schlicker Organ Co., Inc., It was built by Cathedral Craftsmen, Waukesha, Wisconsin.